

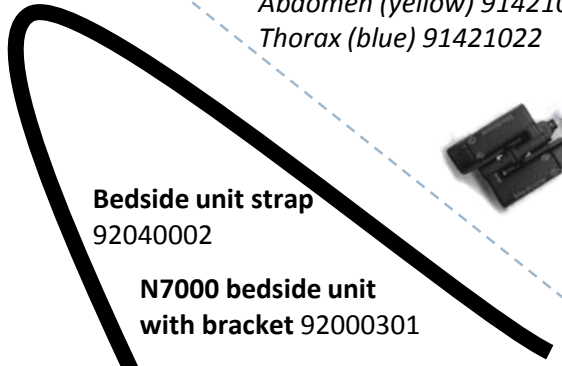
Embla N7000 Component Card V2.4 Obsolete



MDrive unit 92000105



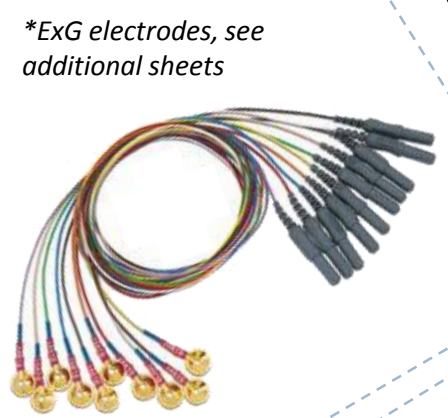
MDrive PSU and plug adapter 92090101 & 92090102



Bedside unit strap 92040002

N7000 bedside unit with bracket 92000301

***Bedside unit bracket** 92040001



***ExG electrodes, see additional sheets**



***Disposable ECG Electrodes Solid Gel, 30pk** 91410500



- *Snap On Electrode Cables**
- 24in/60cm Red 1pk 91411541
- 24in/60cm Green 91411548
- 30in/75cm Black 1pk 91411542
- 39in/100cm Green 91411516
- 39in/100cm Orange 2pk 91411517
- 60in/150cm Black 2pk 91411520
- 78in/200cm Orange 2pk 91411524
- 120in/300cm White 2pk 91411530
- 120in/300cm Black 2pk 91411535



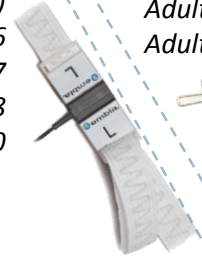
***XactTrace Belt** 65.6ft/20m 91421000

***XactTrace Locks**
Abdomen (yellow) 91421020
Thorax (blue) 91421022



***XactTrace Snap Sensor (Pre-Sized Single Use Belt)**
Abdomen, 26" cable 9011521
Abdomen, 78" cable 90013224
Thorax, 16" cable 9011522
Thorax, 78" cable 90013225

***XactTrace Extension cables**
Abdomen, 78in/200cm 91451070
Thorax, 78in/200cm 91451072



***Airflow Thermistor, key hole connector**
Paediatric, 23.5in cable 91420402
Paediatric, 78in/200cm cable 91420406
Adult, 23.5in/60cm cable 91420430
Adult, 78in/198cm cable 91420435



***Snoring Sensor**
60cm cable 91420600
200cm cable 91420605



X10 proxy X10AProx

Patient unit with cable 92000103



***Patient to Bed unit cable 3m (PURU)** 9202001

***PURU screws (2pk)** PURUscrews

- *Soft oximeter sensors**
- Large adult, 1m cable 8000SL-1
- Large adult, 3m cable 8000SL-3
- Medium adult, 1m cable 8000SM-1
- Medium adult, 3m cable 8000SM-3
- Small, 1m cable 8000SS-1
- Small, 3m cable 8000SS-3



- *Flex oximeter sensors**
- Adult, 1m cable 8000J-1
- Adult, 3m cable 8000J-3
- Infant, 1m cable 8008J
- Neonate, 1m cable 8001J



***Flex oximeter wraps**
Adult 8000JFW
Infant 8008JFW
Neonate 8001JFW

***Oximeter Extension cables**
1m UNI-EXT-1
2m UNI-EXT-2



***Sensor clip for blue Xpod** 9013400

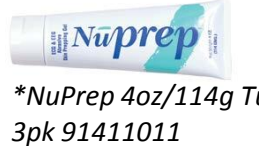


Xpod oximeter, brown plug 91430000

- *Nasal Cannulae**
- Adult 15in/38cm 50pk 91420002
- Paediatric 30cm (n1.21cm) (> 1year) 91420020
- Intermediate infant 90cm (n0.91cm) (3mth - 1yr) 91420030
- Infant 90cm (n0.76cm) (3mth-1yr) 91420040



***Ten20 4oz/114g Jar** 3pk 91411003



***NuPrep 4oz/114g Tube** 3pk 91411011



***Tensive 50g (1.75 oz) tubes** box of 12 90026040

- *Elastic Straps Kit (1x small, 1x med, 1x large)** 91421230
- Small 30in/76cm 91421234
- Medium 45in/140cm 91421236
- Large 72in/183cm 91421238



sales@stowood.co.uk
01865 358860

***Optional item/accessory, ** alternatives available**